

PERSONAL NAVIGATOR



FRIDAY, APRIL 27, 2012

Sunrise: 6:35 a.m. Sunset: 7:40 p.m.

Evening Attire: Cruise Casual

All Ashore: Approx. 9:30 a.m.

All Aboard: 5:00 p.m.

Gangway: Deck 1, Midship, & Deck 1, Forward

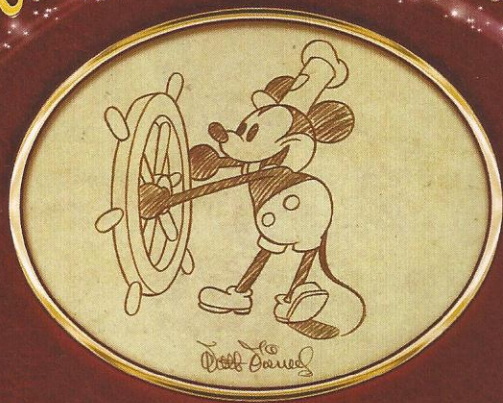
Friday: Partly Sunny High: 77°F/25°C

Saturday: Partly Sunny High: 77°F/25°C

DISNEY'S CASTAWAY CAY

Disney Cruise Line

An Unforgettable Journey



Join us tonight as we celebrate our magical voyage, inspired by the words and wisdom of the man himself Walt Disney.

WALT DISNEY THEATRE
DECKS 3 & 4, FORWARD

6:15 P.M. & 8:30 P.M.



Assistance available at the entrance to the Walt Disney Theatre 30 minutes prior to show time.



Disney's Castaway Cay

Reserved exclusively for Guests on Disney Cruise Line Bahamian and Caribbean cruise vacations, Castaway Cay is Disney's private port-of-call paradise. On this island, enjoy tropical leisure activities, such as snorkeling, boating, swimming and sunbathing.

Friendly Reminders

- Serenity Bay is reserved for Guests 18 and older.
- Your Key To The World Card will need to be used for all transactions on Disney's Castaway Cay except for the Post Office.
- A limited number of all-terrain wheelchairs across from Scuttle's Cove.
- For your convenience, beach towels are available as you leave the ship; please return them at the gangway at the end of your day.
- Due to our commitment to the environment, we ask that seashells, coral and other natural treasures be left undisturbed at Disney's Castaway Cay for all to enjoy.

Debarb Talk Broadcast

Your Cruise Director, Brent, presents important information including details regarding U.S. Customs and Border Protection procedures. Tune in to Channel 5 of your stateroom TV. Please place your luggage outside your stateroom between 8:30 - 10:30 p.m.

Thank you in advance for completing your comment card.

SEA YA' REAL SOON!

SEE YA' REAL SOON

Mickey and Minnie, along with the rest of the Walt Disney Characters, invite you to join them in the ship's Atrium. You won't want to miss this very special farewell meet and greet.

Bring your cameras!

10:15 p.m.

Lobby Atrium,
Deck 3, Midship

Don't Miss:

Run Disney: Castaway Cay 5K

Meet in O'Gills Pub (12+), Deck 4, Aft, 9:15 a.m. Runners meet in O'Gills Pub, Deck 4, Aft, at 9:15 a.m. We will depart the ship at 9:30 a.m., and make our way to the Bike Rentals where the run will begin.

Crab Races

Castaway Cay, Gazebo 1, 11:45 a.m., (Near Cookies Bar-be-que)
Castaway Cay, Gazebo 2, 12:30 p.m., (Pelican Point Tram Stop)
Watch some local sea creatures make a break for the finish line.

Family Talent Show

D Lounge, Deck 4, Midship, 7:30 p.m.
Does your family have what it takes to make their performing dreams come true? Find out at the Disney Fantasy Family Talent Show - dare to show your family's flair!

Cruise Staff Farewell

The Tube (18+), Deck 4, Aft, 11:00 p.m.
Join your Cruise Staff team and see our version of the funniest skit on the high seas, "If I Were Not Upon the Sea."



Visit The Future Cruise Desk Early Today

Please visit the Future Cruise Desk, Deck 4, Midship, as early as possible today. The last day of the cruise tends to get busy in the evening, and we want to be sure you have the opportunity to save 10% on your next cruise, receive up to a \$200 onboard credit, and pay a reduced deposit! Tune to Channel 8 for details.

DINNER MENU

Animator's Palate: Sea Ya' Real Soon
Enchanted Garden: Sea Ya' Real Soon
Royal Court: Sea Ya' Real Soon

DRINK OF THE DAY

Bahama Mama (Alcoholic)
Parrot Song (Non Alcoholic)

IMPORTANT NUMBERS

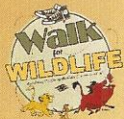
Fire/Security: 7-3001
Medical Emergency: 7-3000
Health Center: 7-1923

FAMILY ACTIVITY HIGHLIGHTS



RUN DISNEY: CASTAWAY CAY 5K

Meet in O'Gills Pub (12+), Deck 4, Aft, 9:15 a.m.
Runners meet in O'Gills Pub, Deck 4, Aft, at 9:15 a.m. We will depart the ship at 9:30 a.m., and make our way to the Bike Rentals where the run will begin. Come cheer on your friends and family as they cross the finish line!



WALK FOR WILDLIFE

Meet on the Pier by the Showers, Castaway Cay, 9:45 a.m.
(The walk will depart at 10:00 a.m.)
Join the crew in an outdoor walk for Earth Day! By participating, a contribution will be made in your honor to the Disney Worldwide Conservation Fund.

CRAB RACES

Castaway Cay, Gazebo 1, 11:45 a.m., (Near Cookies Bar-be-que)
Castaway Cay, Gazebo 2, 12:30 p.m., (Pelican Point Tram Stop)
Watch some local sea creatures make a break for the finish line.

DISNEY VACATION CLUB GROUP PRESENTATION

The Tube, Deck 4, Aft - 4:30 p.m.
Want to learn more about taking magical vacations year after year? Stop by our interactive group presentation to find out more information from a Disney Vacation Club representative.

JEWISH SABBATH

Outlook, Deck 14, Midship, 5:15 p.m.
A quiet space is reserved for those wishing to conduct their own service.



FAMILY TALENT SHOW

D Lounge, Deck 4, Midship - 7:30 p.m.
Does your family have what it takes to make their performing dreams come true? Find out at the Disney Fantasy Family Talent Show - dare to show your family's flair!

DISNEY TRIVIA 2

D Lounge, Deck 4, Midship, 9:45 p.m.
Join your Cruise Staff as they put your Disney knowledge to the test.

FAREWELL KARAOKE

D Lounge, Deck 4, Midship - 10:30 p.m.
Your final chance to take to the stage, grab the mic and sing along to your favorite song.

ADULT ACTIVITY HIGHLIGHTS

SENSES SPA SEMINARS

Sunrise Stretch - Senses Fitness Center 7:00 a.m.
Fab Abs - Senses Fitness Center, 7:30 a.m.
Body Sculpt Boot Camp (Fee Applies) - Senses Fitness Center, 8:00 a.m.
Yoga on the Beach - Serenity Bay 10:30 a.m.



BASKETBALL FREE THROW

In Da Shade, Castaway Cay, 1:00 p.m.



FAREWELL

O'Gills Pub, Deck 4, Aft, 10:00 p.m.

LIVE MUSIC WITH FINE WHINES

La Piazza, Deck 4, Aft - 7:30, 9:45 & 10:45 p.m.
Join our Jazz Duo, Fine Whines as they play live in La Piazza.

LIVE MUSIC WITH ROB THOMPSON

O'Gills Pub, Deck 4, Aft - 10:00 & 11:00 p.m.
Rob Thompson plays live guitar in O'Gills Pub for your listening pleasure.



POP!



The Tube, Deck 4, Aft - 10:30 p.m.

Have you been told you are full of useless information about pop culture? If the answer is "Yes", then you have what it takes to play the high energy game show all about the world of Pop!

CRUISE STAFF FAREWELL

The Tube, Deck 4, Aft - 11:00 p.m.
Join your Cruise Staff team and see our version of the funniest skit on the high seas, "If I Were Not Upon the Sea."



	8:30	8:45	9:00	9:15	9:30	9:45	10:00	10:15	10:30	10:45	11:00	11:15	11:30	11:45	12:00	12:15	12:30	12:45	1:00	1:15	1:30	
FUNNELVISION	Snow White (G) FunnelVision						Mary Poppins (G) FunnelVision															
MOVIES	Disney Nature: Chimpanzee (G) Buena Vista Theatre										Tangled (PG) DOLBY 3D Buena Vista Theatre >2:40 p.m.											
CHARACTER			Chip & Dale Post Office	Mickey Scuttles Cove	Donald Post Office	Minnie Scuttles Cove	Chip & Dale Post Office	Capt. Sparrow Island Pathway	Donald Post Office	Goofy Scuttles Cove			Mickey Gazebo 2	Minnie Gazebo 1			Pluto Gazebo 1					
FUN FOR ALL AGES	Walk for Wildlife - Meet on the pier by showers at 9:45 a.m., Departs at 10:00 a.m.						Crab Races Gazebo 1						Crab Races Gazebo 2									
	Run Disney: Castaway Cay 5K > Departs at 9:30 a.m. Meet at O'Gills Pub						Beach Volleyball Sport's Beach						Basketball Free Throw In Da Shade Game Pavilion									
	Open House Oceaneer Lab										Open House Oceaneer Club											
ADULTS	Friends of Bill W. Outlook										Club 18*21 Free Throw In Da Shade											
ADULTS											Yoga on the Beach Serenity Bay											
Vibe	Wild Side - Meet at Vibe						Teen Hideout															
Edge											In Da Shade											
Oceaneer Lab											Open House											
Oceaneer Club											Open House											
Scuttles Cove (Opens at 9:00am)							Water Relays		Volleyball								Soccer					
							Whale Dig		Whale Dig								Youth Lunch					
Out & About											Whale Dig - Monstro Point											

Symbol for activities that will be repeated during the cruise



	1:45	2:00	2:15	2:30	2:45	3:00	3:15	3:30	3:45	4:00	4:15	4:30	4:45	5:00	5:15	5:30	5:45	6:00	6:15	6:30	6:45							
FUNNELVISION	Princess Diaries (G) FunnelVision						Aladdin (G) FunnelVision						The Little Mermaid (G) FunnelVision															
MOVIES	Disney Nature: Chimpanzee (G) Buena Vista Theatre										War Horse (PG-13) Buena Vista Theatre >7:26 p.m.																	
CHARACTER			Mickey Gangway	Chip & Dale Gangway		Capt. Hook Gangway								Pluto Lobby Atrium	Donald Dk 4, Midship	Pinocchio Preludes												
FUN FOR ALL AGES	Live Music with "The Dreamers" Gazebo 1			Live Music with "The Dreamers" Gazebo 1						Live Piano with Charlie Reuter Lobby Atrium						Jewish Sabbath Outlook												
	Open House Oceaneer Club						Disney Vacation Club Presentation The Tube						An Unforgettable Journey Walt Disney Theatre															
ADULTS																												
ADULTS																												
Vibe	Teen Hideout						Hangin' in Vibe						Sun Deck Fun															
Edge	Invade Teen Hideout						In Da Shade						Hangin' in Edge						Disney Animation - Persistence of Vision									
Oceaneer Lab	Open House						Hangin' in the Lab						Youth Dinner						Stitch's Adventure									
Oceaneer Club							Hangin' in the Club						Youth Dinner						Toy Story Boot Camp									
Scuttles Cove (Opens at 9:00am)	Caribbean Beach Party																											
Out & About																												

FOLD

OUT & ABOUT SERIES
Fold along the dotted lines and take me with you so you don't miss any of the fun!

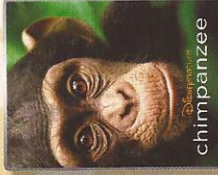


	7:00	7:15	7:30	7:45	8:00	8:15	8:30	8:45	9:00	9:15	9:30	9:45	10:00	10:15	10:30	10:45	11:00	11:15	11:30	11:45	12:00			
FUNNELVISION	Toy Story 3 (G) FunnelVision						Bridge to Terabithia (PG) FunnelVision						Disney Nature: Chimpanzee (G) Buena Vista Theatre											
MOVIES	War Horse (PG-13) Buena Vista Theatre										Disney Nature: Chimpanzee (G) Buena Vista Theatre													
CHARACTER			Minnie Dk 4, Midship	Mickey Dk 4, Midship								Sea Ya' Real Soon Lobby Atrium												
FUN FOR ALL AGES	Family Talent Show D Lounge			An Unforgettable Journey Walt Disney Theatre						Disney Trivia 2 D Lounge						Sea Ya' Real Soon Lobby Atrium								
	Live Music with "The Dreamers" Lobby Atrium			Live Music With "The Dreamers" Lobby Atrium						Farewell Karaoke D Lounge														
ADULTS							Club 18*21 Farewell O'Gills Pub						Pop! The Tube						Cruise Staff Farewell followed by DJ Brandon The Tube					
ADULTS	Live Music with Fine Whines La Piazza						Live Guitar with Rob Thompson O'Gills Pub						Live Guitar with Rob Thompson O'Gills Pub											
Vibe	Disney Animation - Persistence of Vision						Smoothie Hour						Zombified Party											
Edge											That's Hilarious													
Oceaneer Lab							POTC: Tides of Fortune						Magic Playfloor											
Oceaneer Club	Cruisin' with Crush						Super Sloppy Science - Flubber						Movie Time											
Out & About	Mini Golf						Magic Playfloor																	

IN THE SPOTLIGHT SERIES
SOLVE IT! SERIES
JUMP UP! SERIES
CREATE & INVENT SERIES
CLUBHOUSE SERIES
STORYBOOK SERIES

FRIDAY, APRIL 27 2012 - (CASTAWAY CAY)

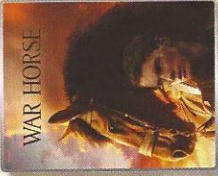
BUENA VISTA THEATRE



chimpanzee
8:30 a.m., 3:00 & 11:00 p.m.
Run Time: 1 hr 18 mins
Rating: G



Tangled
1:00 p.m.
Run Time: 1 hr 40 mins
Rating: PG



WAR HORSE
5:00 & 8:00 p.m.
Run Time: 2 hrs 26 mins
Rating: PG-13



GOOFY'S SPORTS Digital Simulators

Sports Simulator (Basketball, Baseball, Hockey, or Soccer) \$25 / half hr, \$45 / hr
\$12 / half hr, \$20 / hr
Reservations can be made at the Port Adventures Desk, Deck 5, Midship or at the Simulators, Deck 13, Aft.

Character Appearances

- CHIP & DALE**
Island Post Office - 9:30 a.m.
Island Post Office - 10:30 a.m.
Gangway - 3:00 p.m.
- CAPTAIN JACK SPARROW**
Island Pathway - 9:30 a.m.
Island Pathway - 10:45 a.m.
- MICKEY MOUSE**
Scuttie's Cove - 9:45 a.m.
Mt. Rustmore - 10:45 a.m.
Island Gazebo 2 - 12:00 p.m.
Gangway - 2:30 p.m.
Deck 4, Midship Balcony - 8:00 p.m.
- PLUTO**
Mt. Rustmore - 9:45 a.m.
Scuttie's Cove - 10:45 a.m.
Island Gazebo 1 - 12:45 p.m.
Lobby Atrium - 5:15 p.m.
- DONALD DUCK**
Island Post Office - 10:00 a.m.
Island Post Office - 11:00 a.m.
Deck 4, Midship Balcony - 5:30 p.m.
- MINNIE MOUSE**
Scuttie's Cove - 10:15 a.m.
Mt. Rustmore - 11:15 a.m.
Island Gazebo 1 - 12:15 p.m.
Deck 4, Midship Balcony - 7:30 p.m.
- GOOFLY**
Mt. Rustmore - 10:15 a.m.
Scuttie's Cove - 11:15 a.m.
- CAPT. HOOK**
Gangway - 3:30 p.m.
- CINDERELLA**
Lobby Atrium - 5:15 p.m.
- PRINCESS AURORA**
Lobby Atrium - 5:30 p.m.
- PINOCCHIO**
Preludes - 5:45 p.m.



Don't forget your Camera to capture those Magical Moments!
For details of daily Disney character appearances, refer to the character line on your Navigator Grid, or the digital character board in the Lobby Atrium.

YOUTH ACTIVITIES THEMED EXPERIENCES

- CLUBHOUSE SERIES**
focuses on movement and features content which appeals to younger children.
- STORYBOOK SERIES**
is designed with a strong connection to the Disney classic stories.
- JUMP UPI SERIES**
includes large ground games & movement-oriented activities.
- CREATE & INVENT SERIES**
will have a tactile focus allowing children to create and admire their work.
- IN THE SPOTLIGHT SERIES**
focuses on children's stage presence with lots of activities and enthusiasm.
- SOLVE IT! SERIES**
are less active, but will challenge children with problem/solutions-based activities.
- OUT & ABOUT SERIES**
Set outside secured Youth Activities spaces, very active, appealing to Tweens. Recommended 8 - 14 years

SHIP DIRECTORY

YOUTH ACTIVITIES	
DISNEY'S OCEANEER CLUB	4:30 P.M. - 12:00 MID.
DISNEY'S OCEANEER LAB	4:00 P.M. - 12:00 MID.
EDGE	10:00 A.M. - 4:00 P.M.
CASTAWAY CAY	4:30 P.M. - 12:00 MID.
DECK 13, Mid	
IT'S A SMALL WORLD NURSERY	9:00 A.M. - 11:00 P.M.
SCUTTLE'S COVE	9:00 A.M. - 4:00 P.M.
CASTAWAY CAY	10:00 A.M. - 4:00 P.M.
TEEN HIDEOUT	4:30 P.M. - 1:00 A.M.
VIBE	
RECREATION	
AQUADUCK	1:00 P.M. - 10:00 P.M.
AQUALAB	9:00 A.M. - 7:00 P.M.
DONALD'S POOL	6:00 A.M. - 11:00 P.M.
GOFL/ SPORTS SIMULATORS	1:00 P.M. - 6:00 P.M.
GOOFLY GOLF	8:00 A.M. - 10:00 P.M.
GOOFLY'S SPORTS DECK	9:30 A.M. - 6:00 P.M.
MARGE'S BARGES	9:30 A.M. - 3:30 P.M.
MICKEY'S SLIDE	6:00 A.M. - 11:00 P.M.
MIDSHIP DETECTIVE AGENCY	9:00 A.M. - 9:00 P.M.
NEMO'S REEF	10:00 A.M. - 7:00 P.M.
QUILT COVE POOL	6:00 A.M. - 12:00 MID.
SATELLITE FALLS	6:00 A.M. - 6:00 P.M.
SENSES FITNESS CENTER	6:30 A.M. - 10:00 P.M.
GENERAL INFORMATION	
ARR-CADE	24 HOURS
DISNEY VACATION CLUB DESK	6:00 P.M. - 10:00 P.M.
FUTURE CRUISE SALES	4:00 P.M. - 6:00 P.M.
	7:30 P.M. - 11:00 P.M.
GUEST SERVICES	24 HOURS
MEDICAL HEALTH CENTER	9:30 A.M. - 11:00 A.M.
	4:30 P.M. - 7:00 P.M.
PORT & SHOPPING DESK	DECK 4, MID
PRELUDES	DECK 3, FWD
SENSES SPA AND SALON	DECK 11, FWD
SHUTTERS PHOTO GALLERY	DECK 4, MID
SHUTTERS DIGITAL	DECK 4, MID
SHOPPING	
BIBBIDI BOBBIDI BOUTIQUE	DECK 5, MID
MICKEY'S MAINSAIL	DECK 3, FWD
SEA TREASURES	DECK 3, FWD
VISTA GALLERY	DECK 4, MID
WHITECAPS	DECK 4, MID

DINNER
Animators' Palate: Sea Ya Real Soon (Alcoholic)
Enchanted Garden: Sea Ya Real Soon
Royal Court: Sea Ya Real Soon
Dining Times: 5:45pm & 8:15pm

DRINK
Bahama Mama (Alcoholic)
Parrot Song (Non-Alcoholic)

WEATHER FORECAST
Friday: Partly Sunny
High: 77°F/25°C
Saturday: Partly Sunny
High: 77°F/25°C

Evening Attire: Cruise Casual

DINING & LOUNGES

BREAKFAST	
CABANAS CONTINENTAL	DECK 11, AFT 7:00 A.M. - 7:30 A.M.
CABANAS	DECK 11, AFT 7:30 A.M. - 10:45 A.M.
ENCHANTED GARDEN	DECK 2, MID 8:00 A.M. - 10:00 A.M.
ROYAL COURT	DECK 3, MID 8:00 A.M. - 9:30 A.M.
LUNCH	
CABANAS	DECK 11, AFT 12:00 P.M. - 1:30 P.M.
COOKIES	CASTAWAY CAY 11:30 A.M. - 2:00 P.M.
COOKIES TOO	CASTAWAY CAY 11:30 A.M. - 2:00 P.M.
FULLMORE'S FAVORITES	DECK 11, MID 12:00 P.M. - 6:00 P.M.
LUIGI'S PIZZA	DECK 11, MID 12:00 P.M. - 6:00 P.M.
TOW MATER'S GRILL	DECK 11, MID 12:00 P.M. - 10:00 P.M.
DINNER	
ANIMATOR'S PALATE	DECK 3, AFT 5:45 P.M. & 8:15 P.M.
ENCHANTED GARDEN	DECK 2, MID 5:45 P.M. & 8:15 P.M.
ROYAL COURT	DECK 3, MID 5:45 P.M. & 8:15 P.M.
LATE NIGHT SNACKS	
LA PLAZZA (18+)	DECK 11, AFT 10:45 P.M. - 11:45 P.M.
LUIGI'S PIZZA	DECK 11, MID 9:30 P.M. - 12:00 MID.
ADDED FEATURES	
BEVERAGE STATION	DECK 11, Mid 24 HOURS
EYE SCREAM	DECK 11, Mid 11:00 A.M. - 11:00 P.M.
ROOM SERVICE	DIAL O CLOSSES AT 1:30 A.M.

LATE NIGHT SNACKS

LA PLAZZA (18+)	DECK 11, AFT 10:45 P.M. - 11:45 P.M.
LUIGI'S PIZZA	DECK 11, MID 9:30 P.M. - 12:00 MID.

ADDED FEATURES

BEVERAGE STATION	DECK 11, Mid 24 HOURS
EYE SCREAM	DECK 11, Mid 11:00 A.M. - 11:00 P.M.
ROOM SERVICE	DIAL O CLOSSES AT 1:30 A.M.

ENTERTAINMENT - LOUNGES - BARS

Adults must be 21 and older to consume alcoholic beverages.	
BON VOYAGE	DECK 3, MID 3:00 P.M. - 11:00 P.M.
COVE BAR (18+)	DECK 11, FWD 12:00 P.M. - 10:00 P.M.
COVE CAFE (18+)	DECK 11, FWD 7:00 A.M. - 10:00 P.M.
CURRENTS (18+)	DECK 13, FWD 1:00 P.M. - 11:00 P.M.
D LOUNGE	DECK 4, MID SHOW TIMES
FROZENA	DECK 11, MID 11:00 A.M. - 10:30 P.M.
LA PLAZZA	DECK 4, AFT 4:00 P.M. - 12:00 MID.
O'GILLIS PUB	DECK 4, AFT 3:00 P.M. - 12:00 MID.
OOH LA LA (18+)	DECK 4, AFT 5:00 P.M. - 12:00 MID.
OUTLOOK	DECK 14, MID
SKYLINE (18+)	DECK 4, AFT 5:00 P.M. - 12:00 MID.
THE TUBE (18+)	DECK 4, AFT 10:00 P.M. - 1:00 A.M.
VISTA CAFE	DECK 4, MID 7:30 A.M. - 11:00 P.M.
WAVES	DECK 12, AFT 1:00 P.M. - 8:00 P.M.

CASTAWAY CAY BARS

CASTAWAY AIR BAR	CASTAWAY CAY 9:30 A.M. - 3:30 P.M.
CONCHED OUT BAR	CASTAWAY CAY 9:00 A.M. - 4:00 P.M.
HEADS UP BAR	CASTAWAY CAY 9:30 A.M. - 3:30 P.M.
SAND BAR	CASTAWAY CAY 9:00 A.M. - 4:00 P.M.

Consumers who order raw or partially cooked, ready-to-eat food of animal origin, are hereby informed that the food is not sufficiently cooked to ensure its safety.

IMPORTANT NUMBERS

Fire/Security: 7-3001
Medical/Emergency: 7-3000
Health Center: 7-1923

All Ashore:
Approx. 9:30 a.m.

All Aboard:
5:00 p.m.

DFB/DFE/0003/5.21.12/RD/C/Disney

YOUTH ACTIVITIES HIGHLIGHTS

DINE & PLAY

A convenience for families dining at 8:15 p.m., our Youth Activities Counselors will be available at 9:15 p.m. at the entrance of Royal Court, Enchanted Garden and Animator's Palate dining rooms to bring registered children to join the fun in the Youth Activity areas.



Deck 5 Midship (7-1440) 4:30 p.m. - 12:00 mid.
(3 - 12 years old)

TOY STORY BOOTCAMP

6:00 p.m.

Ten-hut! The Green Army Men are holding a boot camp and your junior cruiser is invited to join in the fun.

CRUISIN' WITH CRUSH

7:30 p.m.

Learn to talk turtle while interacting with Crush from Disney/Pixar's Finding Nemo. It's "totally sweet!"



Deck 5 Midship (7-1445) 4:00 p.m. - 12:00 mid.
(3 - 12 years old)

STITCH'S ADVENTURE SQUAD

6:30 p.m.

Stitch, everyone's favorite alien, is making an appearance to share some of his mischievous games and activities.

SUPER SLOPPY SCIENCE - FLUBBER

9:30 p.m.

Join Professor Make-O-Mess in some of the most extreme experiments you will ever see in the world of Super Sloppy Science!



Deck 13 Midship (41-14426) 4:30 p.m. - 12:00 mid.
(11 - 14 years old)

DISNEY ANIMATION: ILLUSION OF LIFE - PERSISTENCE OF VISION

6:00 p.m.

Go behind the scenes at Walt Disney Animation Studios and learn the principles that make animation work, and try your hand at creating your own easy animation demonstration in this fun and fascinating enrichment program.

THAT'S HILARIOUS

9:30 p.m.

A game of quick wit and improvisation where you become the star of the show. Work with your fellow cruisers to perform sketches and applaud loudly as you each have the chance to perform to a live audience.



Entrance on Deck 4 Forward (7-9418)
4:30 p.m. - 1:00 a.m.
(14 - 17 years old)

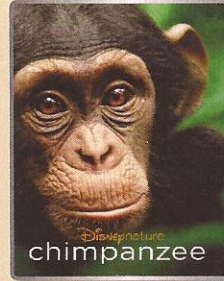
ZOMBIFIED PARTY

11:00 p.m.

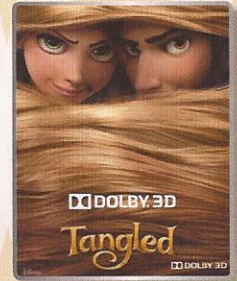
Join the Producer and Jessie to watch the preview of the final version of the film and join us for a celebration Party.

BUENA VISTA THEATRE

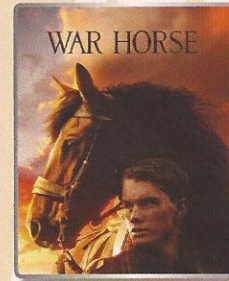
Today's Movies



8:30 a.m., 3:00 & 11:00 p.m.
Run Time: 1 hr 18 mins
Rating: G



1:00 p.m.
Run Time: 1 hr 40 mins
Rating: PG



5:00 & 8:00 p.m.
Run Time: 2 hrs 26 mins
Rating: PG-13



Does your family have what it takes to make their performing dreams come true? Find out at the Disney Fantasy Family Talent Show – dare to show your family's flair!

**D Lounge,
Deck 4, Midship
7:30 p.m.**



Have you been told you are full of useless information about pop culture? If the answer is "Yes", then you have what it takes to play the high energy game show all about the world of Pop!

**The Tube (18+),
Deck 4, Aft
10:30 p.m.**

YOUTH ACTIVITIES OPEN HOUSE

Open House is an opportunity for all to come and participate in a variety of exciting activities and free time in the Oceaneer Club, Lab, Edge & Vibe throughout the cruise. During these times secured programming will still be offered in the other venue for those looking to check their children into care.

MORE TO ENJOY WHILE ONBOARD

THE MUPPETS

There's a Muppet mystery onboard, and Kermit and Pepe need YOU to solve it! Search the ship for clues and use our special detective "badge" to catch the culprit!



Decks 2 & 5, Midship
9:00 a.m. - 9:00 p.m.



SENSES
SPA & SALON
RECOVERY PACKAGE

- 20 minute Back, Neck and Shoulder Massage
- 20 minute Scalp Massage
- 20 minute Foot & Ankle Massage

60 minutes total \$99

TODAY'S SHOPPING SPECIAL

Stop by Whitecaps to try on the world's most memorable white diamond pieces and commemorate your cruise. Ask the hosts about 50% savings off US retail. Whitecaps, Deck 3, Forward.

Sophia Fiori



Shutters

GET THE PICTURE

This is your last chance to purchase your photo CD and prints. Order all your stateroom photos on a CD for \$349.95 and we will include all the prints for ONLY \$50 extra!

All your photos will be available in your stateroom folder and you can view it on our interactive photo kiosks in Shutters Digital on Deck, 4, Midship. Visit Shutters to learn more. Conditions apply

**Please note that photos are available for viewing on our interactive photo kiosks approximately five hours after being taken and are only available for purchase during this cruise.*

Disney CRUISE LINE. PORT ADVENTURES

Welcome to Disney's Island Paradise Castaway Cay. Today is the day to relax in an inner tube, snorkel in the Caribbean blue, get up-close and personal to real life stingrays or fly high in the sky on a parasail excursion during a breathtaking aerial adventure. Visit Marge's Barges or one of the rental locations and our friendly team will assist in making any last minute bookings.

PORT ADVENTURES MEETING TIMES AND LOCATIONS

As per ticket	Castaway Ray's Stingray Adventure	Gil's Fins and Boats
As per ticket	Glass Bottom Boat	Marge's Barges
As per ticket	Castaway Cay Bottom Fishing	Marge's Barges
As per ticket	Seahorse Catamaran Snorkel	Marge's Barges
As per ticket	Nature Walk and Kayaking	Marge's Barges
As per ticket	Parasailing	Marge's Barges
9:30 a.m.	Teen Wild Side	Vibe
As per ticket	Watercraft Ski Adventure	Boat Beach

CASTAWAY CAY ISLAND RENTALS

Bicycles	9:30 a.m. - 4:00 p.m.	Near Cookies Too
Boats	9:30 a.m. - 4:00 p.m.	Boat Beach
Snorkeling Gear	9:30 a.m. - 3:30 p.m.	Gil's Fins and Boats / Flippers and Floats
Float	9:30 a.m. - 3:30 p.m.	Gil's Fins and Boats / Flippers and Floats
Getaway Package	9:30 a.m. - 3:30 p.m.	Gil's Fins and Boats / Flippers and Floats

Reservations can be made on the island at each rental location. Castaway Ray's walk up reservations can be made at Gil's Fins and Boats on Family Beach.

SHOPPING

SHOPPING IN PARADISE

Disney's Castaway Cay features two shopping locations with exclusive Castaway Cay merchandise. Your chance to take home a memory of our private island.

PREMIUM SPIRITS

For those who like to taste the finer things in life, join us to preview our extensive collection of premium spirits. All at duty free pricing!

VISTA GALLERY

Last opportunity to purchase your Disney art. Shipping available. Stop by the Vista Gallery, Deck 4, Midship, to find out more.

SPECIAL VALUE

Don't miss our special value merchandise. Stop by Whitecaps, Deck 3, Forward.

LAST CHANCE - SOPHIA FIORI DIAMOND BLOW OUT SALE!

This is your last chance to commemorate your Disney Cruise vacation with Sophia Fiori Caribbean blue diamonds. Enjoy last chance savings up to 50% off your purchase. Free jewelry gift with purchase. Sophia Fiori diamonds are not available back home so this is your final opportunity to choose from \$4 million worth of diamonds. Available in all price points from \$500 up to extravagant red carpet designs. There is literally something for every style, taste, and budget. Whitecaps, Deck 3, Forward.

CAPTURE THE MEMORIES

Although our time together is coming to a close, you can relive your favorite moments anytime you wish to with a Disney Cruise Line photo album or frame. Visit Mickey's Mainsail, Deck 3, Forward, to find a variety of frames, albums and scrapbooking kits.

Due to port regulations, when the ship is docked, the stores will remain closed.

IMPORTANT INFORMATION

Security Notice

All Guests (including children) who wish to disembark the ship are required to present their Key to the World card at the gangway. A photo ID is also required for those Guests who are 18 years of age or older. Guests under the age of 18 are required to have a Parent, Guardian or other responsible adult sign an authorization form at the time it is given out if they wish to go ashore unaccompanied. Authorization forms are available at the gangways and Guest Services.

Please Note:

Please remember to use plenty of sunscreen and mosquito repellent when venturing ashore.

Cold and Flu Reminder

Please wash hands frequently and thoroughly, particularly before meals. Contact the Health Center by dialing 7-1923, should anyone in your party become ill.

Corridor Quiet Hours

As a courtesy to all our Guests, please recognize quiet hallway hours from 10:00 p.m. til 8:00 a.m.

Inclement Weather

For the safety of all Guests, outdoor events may be changed due to unforeseen weather conditions.

Environmental Message

With Disney's commitment to the Environment, please refrain from throwing anything over the Ship's side. Thank you!

No Reserved Seats Policy

As a courtesy to all our Guests, we kindly advise that the saving of seats is not permitted in the Walt Disney Theatre, and the saving of the sun loungers is not permitted on Deck 11, 12, and 13. Items left unattended will be returned to lost and found at Guest Services, Deck 3 Midship.

Smoking

For the comfort of our guests the following areas are designated as Smoking areas: - Promenade Deck (Deck 4), smoking is permitted Port Side, Aft only from 6:00 p.m. to 6:00 a.m.

- Currents - Deck 13, Forward, Port Side.

- Meridian Bar - Deck 12, Aft, Port Side, outside.

- Smoking is permitted on stateroom verandahs.

Smoking is prohibited inside all guest staterooms.

Guests found smoking in their staterooms will be charged a \$250 stateroom recovery fee.

Walt Disney Theatre

Theatrical performances may use artificial fog, strobe lights, pyrotechnics and other special effects. For the safety of our performers and the comfort of those around you, the use of any photography, video recording device or any electronic equipment is prohibited.

Verandah Safety

Please do not leave any combustible materials on your balcony when not present in your stateroom for safety reasons.

DF/BD/TE/003/4.21.12/RD/©DISNEY